

Compression fittings with 50µ filter



Fitting with filter
(marked with two green dots)



Fitting without filter

The fittings are delivered in pairs and must be mounted as follows:
with filter at the inlet and without filter at the outlet.

Versions

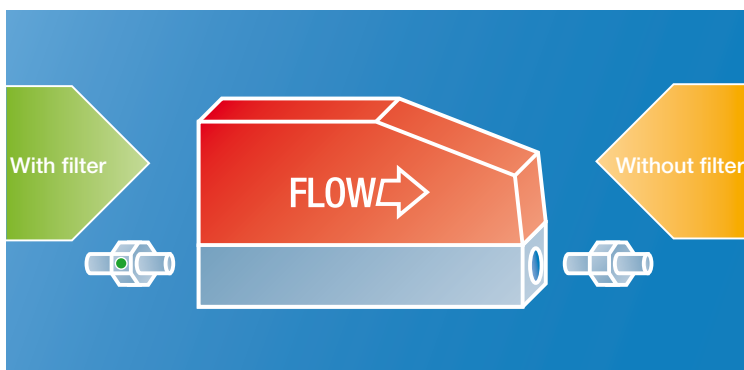
| Article | Type/Connections | Materials |
|----------|------------------|----------------------|
| 328-1001 | G 1/4" to 6mm | Stainless steel, FKM |
| 328-1002 | G 1/4" to 1/4" | Stainless steel, FKM |
| 328-1003 | G 1/4" to 12mm | Stainless steel, FKM |
| 328-1004 | G 1/4" to 1/2" | Stainless steel, FKM |

Replacement filter

| Article | Description | Quantity |
|----------|-------------|----------|
| 328-1401 | Filter disc | 5 units |

Pressure loss (air)

| Flow | Pressure loss G 1/4" |
|----------|----------------------|
| 5 l/min | 2.2 mbar |
| 20 l/min | 25 mbar |
| 40 l/min | 85 mbar |
| 60 l/min | 180mbar |



Mounting of the fittings

Dimensions (mm)

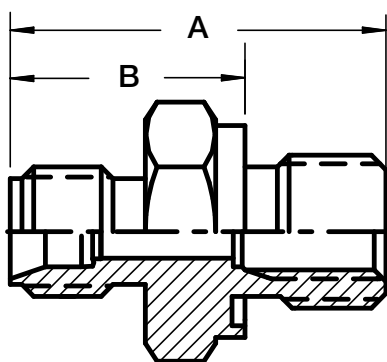
| Type | A | B | Wrench size |
|----------------|------|------|-------------|
| G 1/4" to 6mm | 32 | 20 | 19 |
| G 1/4" to 1/4" | 32 | 20 | 19 |
| G 1/4" to 12mm | 33.5 | 21.5 | 27 |
| G 1/4" to 1/2" | 33.5 | 21.5 | 27 |

Mounting

The fitting with filter must be mounted at the inlet (in the direction of the flow).

Do not injure the seals (O-rings) during mounting.

Please do not use liquid sealants or Teflon tape for sealing the threads.



Dimensions (without connecting nut)

A = Overall length

B = Outside length after mounting